

Field Portable Load Cell Array



What is your Vibrator putting into the ground??

The SSC portable Load Cell System is designed to measure vibrator performance where they are operating in the field or at the shop. Depending on the size of the vibrator, four of the SSC Load Cells are placed under the pad of the Vib and the sweep is recorded using a 24 channel DAQlink.

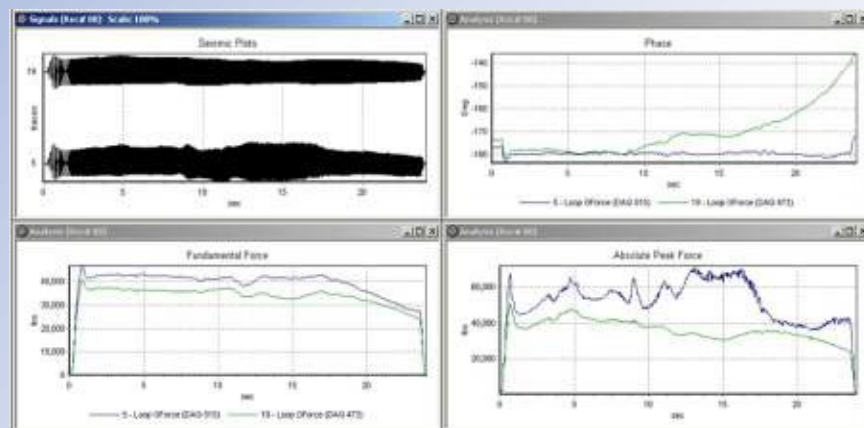


Portable Load Cell System features:

- Easy to use Software
- Robust Database
- GPS for Time and Location of test
- For use with any Seismic Vibrator
- 12 VDC operation

Each Load Cell System uses an Interface Box to gather data from the Loads Cells and transmit it to a recording device for interpretation by the provided VSCOPE software.

A typical system includes four base plates with each containing three load cells. The total weight capacity of the system depends on the type of load cells installed. Typical load cell capacities include 25,000 lbs. per cell and 50,000 lbs. per cell



The difference between the Load Cell output (green color) and the Weighted Sum output from the accelerometers (blue color).

